

QUICK START

Spray Station

HV2900



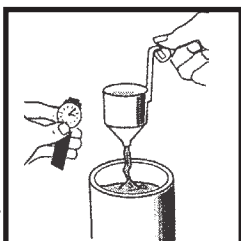
PLEASE READ MAIN INSTRUCTION MANUAL BEFORE USE

Basic Rules of Spraying

- Never spray outside if the weather is raining, windy, or in temperatures of +90F or less than 45F, as this may affect the paint and potentially ruin your finish.
- Always have a drop cloth and wear a mask like you would for a roller or brush if spraying inside.
- Practice your technique (even if you have sprayed before), just to familiarize yourself with the coating and different spray patterns and flow rate of the gun.
- Spend a few minutes getting the viscosity of the paint where it needs to be.
- Always clean up your Spray Gun after every use.

Follow these simple instructions to set-up your Spray Station:

a) Kit includes Turbine, Spray Gun fitted with 3.0mm/ 0.12" Latex Needle Tip, Hose, Viscosity Cup, 1.5mm (0.06") Needle and Fluid Tip for finer finish or thin materials.



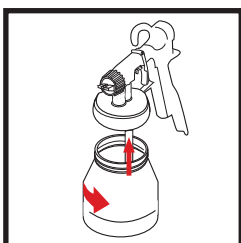
b) **Important** - always stir the paint thoroughly and then test the viscosity of the paint. Many coatings do not need thinning. However, if required refer to the main instruction manual (Thinning Section).

c) Strain the paint while pouring into the Paint Container using hosiery or cheese cloth.

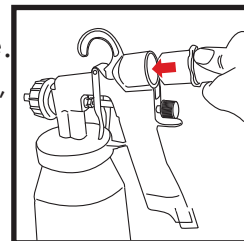
ALWAYS KEEP THE MOTOR UNIT AS FAR AWAY FROM THE SPRAYING AREA AS POSSIBLE TO PREVENT PAINT CONTAMINATING THE MOTOR.

d) Screw gun head onto Paint Container.

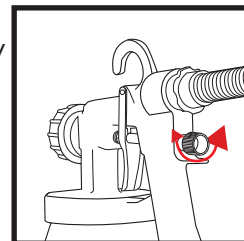
e) Adjust paint volume control knob all the way in (clockwise) until the trigger cannot be pulled.



- f) Insert Hose into rear of Spray Gun and connect up to turbine.
g) Set the Spray Gun to Horizontal, Vertical or Round pattern.

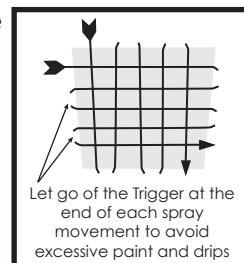


- h) Switch on and test spraying on a piece of cardboard or an inconspicuous area to get the feel of the Spray Gun and to familiarise yourself with the spray patterns and paint flow rate.



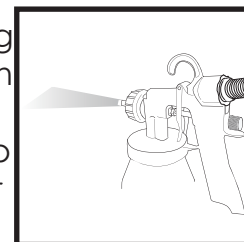
- i) Gradually open the control knob until the right volume of paint is flowing through the Spray Gun.
- j) Never spray with your wrist, use your arm and always try to keep the same distance away from the surface. 6"-12" is recommended.
- k) Move your arm in conjunction with the flow rate of the paint. You will immediately see if you have too little or too much coating on a surface. If too little, increase flow rate or slow down your arm movement, if too much, reduce flow rate or increase the speed of your arm movement.

- l) Try to overlap coats on flat surfaces such as walls or ceilings. When you are using a latex try using a cross hatch technique (left to right and up and down). If you develop a good technique you should only have to do one coat.



- m) Using HVLP will ensure the paint dries much faster than if you applied with a brush or roller so you can apply a second coat if necessary much sooner.

- n) Once you have completed your painting - empty remaining paint back into paint can, clean the Paint Container, Paint Container Seal, and the Pick-up Tube. Pour 1/2 quart of water or mineral spirit (if oil-based) into the Paint Container and spray for 30-40 seconds or until the spray is clear.



- o) Wipe the Needle, Fluid Tip and Air Cap clean. Remove the Needle if necessary and wipe clean.

