

10" Woodworking Bandsaw

Model: 10-305

RIKON

POWER TOOLS



Parts List

Record the serial number and date of purchase
in your manual for future reference.

Serial number: _____

Date of purchase: _____

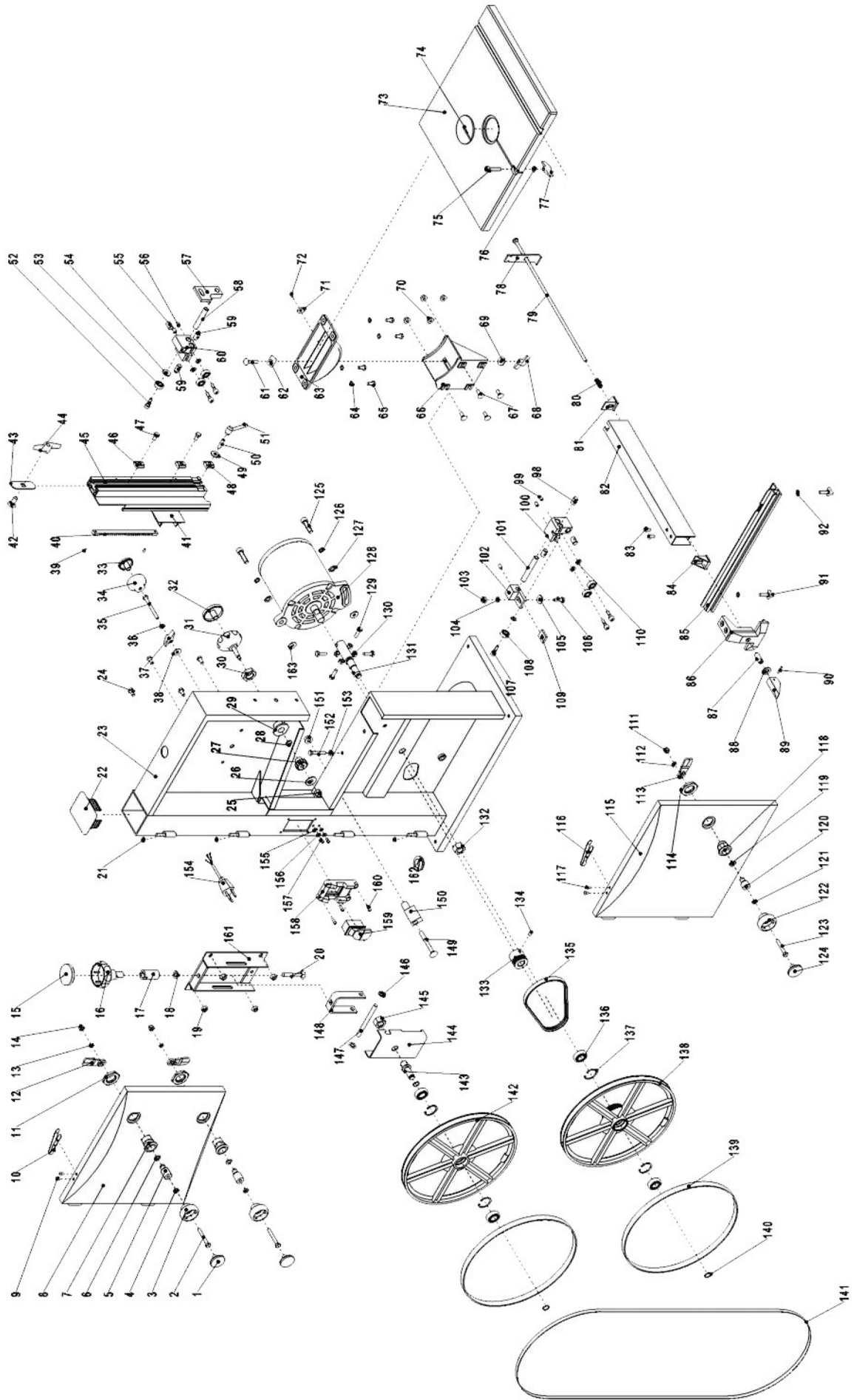
For more information:

www.rikontools.com or info@rikontools.com

For Parts or Questions:

techsupport@rikontools.com or 877-884-5167

PARTS LIST



KEY NO.	DESCRIPTION
1	Door locking knob Cap
2	Hex. Bolt M6x45
3	Door locking knob body
4	Hex. Nut M6
5	Slotted Insert
6	Special Spring Washer 10
7	Lock Housing
8	Upper Door
9	Rivet 4x8
10	Leaf Spring
11	Special Nut M22
12	Tongue Lock
13	Spring Washer 6
14	Lock Nut M6
15	Blade Tension Knob Cap
16	Blade Tension Knob Body
17	Blade Tensioner
18	Washer 8
19	Flange Nut M6
20	Carriage Bolt M8x50
21	Bushing Ring
22	Top Plug
23	Frame
24	Hex. Bolt M6x12
25	Lock Nut M6
26	Washer 6
27	Gear
28	Special Spring Washer 8
29	Tube
30	Plastic Nut M20
31	Adjusting Knob Body
32	Adjusting Knob Cap
33	Blade Tracking Knob Cap
34	Blade Tracking Knob Body
35	Hex. Bolt M6x60
36	Hex. Nut M6
37	Wing Nut M6
38	Washer 6
39	Tapping Screw ST3.5x13
40	Rack
41	Slider
42	Carriage Bolt M8x20
43	Bolt Guide
44	Wing Nut M8
45	Blade Guide
46	T-nut M6
47	Hex. Bolt M6x10
48	T-nut M6
49	Washer 6
50	Hex. Socket Set Screw M6x25
51	Ratchet handle
52	Guide Adjust Screw
53	Ball Bearing 6mm
54	Washer 6
55	Bearing Mount Cylinder
56	Hex. Socket Set Screw M6x10
57	Upper Guide Mount
58	Upper Guide Shaft
59	Bearing Mount Cylinder w/Cap
60	Upper Guide Body
61	Carriage Bolt M6x30
62	Glide Piece
63	Upper Table Trunion
64	Lock Washer 6
65	Hex. Bolt M6x12
66	Lower Table Trunion
67	Carriage Bolt M6x16
68	Wing Nut M6
69	Washer 6
70	Flange Nut M6
71	Indicator
72	Tapping Screw ST3.5x9.5
73	Table
74	Table Insert
75	Hex. Socket Head Cap Screw M6x30
76	Washer 6
77	Wing Nut M6
78	Fence Clamper
79	Threaded Rod
80	Spring
81	Rod Guide
82	Fence

KEY NO.	DESCRIPTION
83	Flat Countersunk Head Screw M6x10
84	Rod Guide
85	Guide Rail
86	Fence Carrier
87	Special Screw
88	Washer 10
89	Fence Handle
90	Roll Pin 3x18
91	Star knob screw
92	Washer 6
93	Aluminium Bar
94	Miter Gauge Base
95	Indicator
96	Pan Head Screw M5x6
97	Knob
98	Bearing Mount Cylinder
99	Hex. Socket Set Screw M6x10
100	Lower Guide Body
101	Lower Guide Shaft
102	Lower Guide Mount
103	Lock Nut M6
104	Washer 6
105	Washer 6
106	Hex. Bolt M6x20
107	Guide Adjust Screw
108	Ball Bearing 6mm
109	Guide Key
110	Washer 6
111	Lock Nut M6
112	Spring Washer 6
113	Tongue Lock
114	Special Nut M22
115	Lower Door
116	Leaf Spring
117	Rivet 4X8
118	Lock Housing
119	Special Spring Washer 10
120	Slotted Insert
121	Hex. Nut M6
122	Door locking knob Body
123	Hex. Bolt M6x40
124	Door locking knob Cap
125	Hex. Socket Head Cap Screw M8x30
126	Spring Washer 8
127	Washer 8
128	Motor
129	Hex. Bolt M6x20
130	Hex. Nut M6
131	Lower Bearing Bolt
132	Hex. Nut M14
133	Motor Pulley
134	Hex. Socket Set Screw M6x10
135	Drive Belt
136	Ball Bearing 12mm
137	Retaining Ring 28
138	Lower Wheel
139	Tire
140	Retaining Ring 12
141	Saw Blade
142	Upper Wheel
143	Upper Bearing Bolt
144	Wheel Carrier Bracket
145	Hex. Nut M14
146	Star Lock
147	Mount Shaft
148	Blade Tensioner
149	Carriage Bolt M8x65
150	Brush Strip
151	Flange Nut M8
152	Hex. Bolt M6x35
153	Hex. Nut M6
154	Cable w/Plug
155	Lock Washer 4
156	Washer 4
157	Pan Head Screw M4x8
158	Switch Cover Plate
159	Lock Switch
160	Pan Head Screw M4x12
161	Tension Bracket
162	Rubber Tube
163	Washer 8



5-Year Limited Warranty

RIKON Power Tools, Inc. ("Seller") warrants to only the original retail consumer/purchaser of our products that each product be free from defects in materials and workmanship for a period of five (5) years from the date the product was purchased at retail. This warranty may not be transferred.

This warranty does not apply to defects due directly or indirectly to misuse, abuse, negligence, accidents, repairs, alterations, lack of maintenance or normal wear and tear. Under no circumstances will Seller be liable for incidental or consequential damages resulting from defective products. All other warranties, expressed or implied, whether of merchantability, fitness for purpose, or otherwise are expressly disclaimed by Seller. This warranty does not cover products used for commercial, industrial or educational purposes.

This limited warranty does not apply to accessory items such as blades, drill bits, sanding discs or belts and other related items.

Seller shall in no event be liable for death, injuries to persons or property, or for incidental, contingent, special, or consequential damages arising from the use of our products.

To take advantage of this warranty proof of purchase documentation, which includes date of purchase and an explanation of the complaint, must be provided.

The Seller reserves the right to effect at any time, without prior notice, those alterations to parts, fittings, and accessory equipment which they may deem necessary for any reason whatsoever.

To take advantage of this warranty, you can register online at www.rikontools.com or fill out the enclosed warranty card and mail it to:

RIKON Warranty
16 Progress Rd.
Billerica, MA 01821

The card must be entirely completed in order for it to be valid. If you have any questions please contact us at 877-884-5167 or email us at warranty@rikontools.com.

RIKON **POWER TOOLS**

