

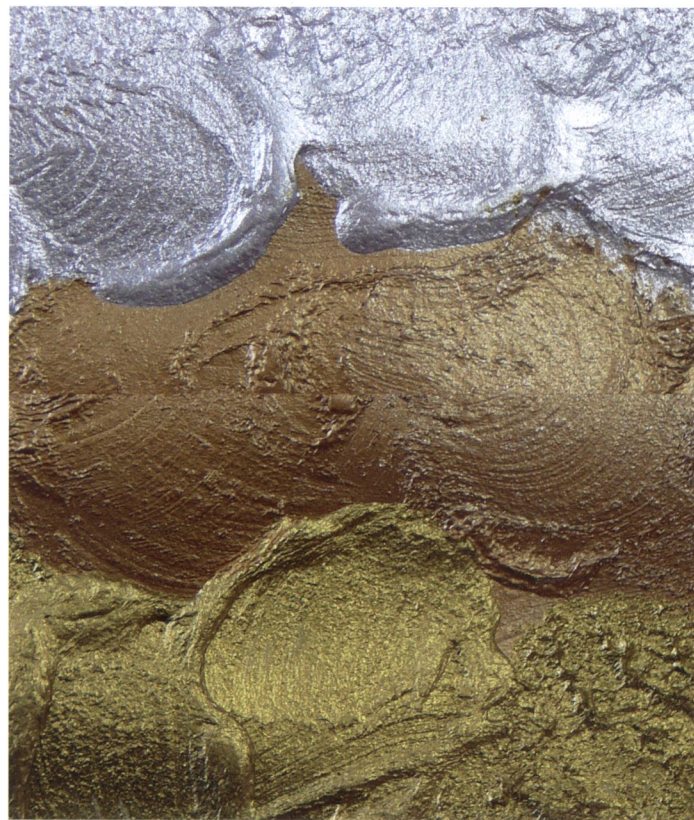
Normally **water based** or **water-thinnable**, unpigmented or lightly pigmented coating systems can be tinted by MIXOL® Metallic Concentrates, such as **decorative fillers** or **glazes**, **wall**, **wood** and **cement glazes**, **wood seals**, **water paints**, **plastic paints**, **silk gloss varnishes** and **alkyd lacquers**.

Recommended maximum amount to be added: with dispersions approx. 10%, with varnishes, colourless coatings, glazes approx. 3-5%. Stir in slowly using a stirring apparatus, if available!

When using white or coloured pigment coatings such pigments may under certain conditions hide the metal flakes of the added metallic paste to impede a metallic effect. Thus appropriate preliminary tests should be performed before tinting such materials.

When using materials sensitive to water or solvent-based as well as special materials incompatibilities may arise depending on type and brand. Thus MIXOL® Metallic Pastes **cannot be generally used with every material!**

Please in any case perform preliminary tests to exclude viscosity problems (thickening of the tinted materials) and incompatibilities with the materials to tint beforehand!



MIXOL® Metallic Effect Concentrates are aqueous pigment pastes with a high portion of gold bronze, aluminium and pearlescent pigments.

The metallic effect can best be achieved if MIXOL® Metallic Concentrates are added to transparent coating systems. Dependent on the amount added a huge variety of gold, silver or copper effects ranging between lightly shimmering glitter to a hiding metal-like surface can be achieved.