

# Cool Blocks Band Saw Blade Guides

*replace standard metal or plastic guides and enhance cutting performance!*

They lubricate the band saw blade but do not make it oily. Cool Blocks are made of a non-metallic composite material—**Graphite Impregnated Phenolic Laminate** with three synthetic dry lubricants.

**Metal guide blocks** create metal to metal contact, causing heat, friction, premature blade wear and breakage. **Imitation plastic guides** melt and offer **no** lubrication.

**Cool Blocks blade guides allow blades to run cooler and last longer with less friction.**

They improve the cutting performance of any blade width, but are **most** effective with 1/16" and 1/8" wide blades for tight radius work.

**Cool Blocks Blade Guides fine tune your band saw!**

Actual Size photos below  
page is 8 1/2" x 11"



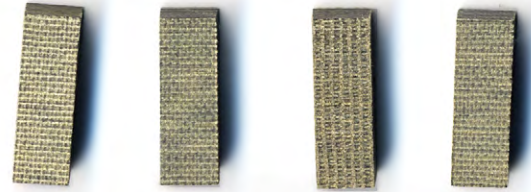
## CB50055BL

For 14", 16", and 18" imported Band Saws using 12mm (.472") round guides. Contains: 4 guide blocks 12mm (.472") diameter x 7/8"



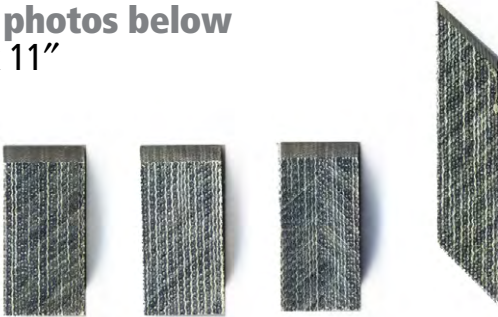
## CB50070BL

For Delta 10" 28-140, 16" 28-560 3-wheel, and 12" 28-190 Band Saws. Contains: 4 guide blocks 5/16" square x 7/8"



## CB50000BL

For Delta 14" Band Saws. Contains: 3 guide blocks 1/2" x 1/2" x 7/8" and 1 guide block 1/2" x 3/8" x 1-3/4"



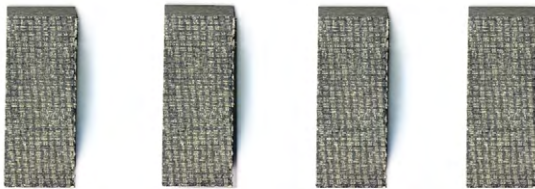
## CB50080BL

Round guides for 8" Delta 28-180 & 28-185 and 10" 3-wheel Benchtop Saws Including: Delta 28-160 and 28-180 8" 2-wheel, Sears, K-Mart, Ohio Forge, ProTech, Builder's Square. Most saws taking 5/8" blades. Contains: 4 guide blocks 3/16" diameter x 7/8"



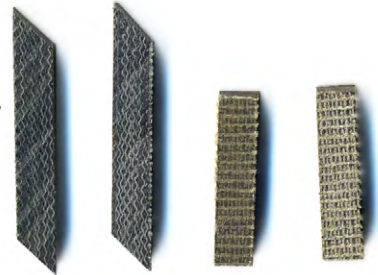
## CB50010BL

For Sears 12" Tilting Table Band Saws, Skil 10" HD3640, and Dremel 10" 1120. Contains: 4 guide blocks 3/8" x 3/8" x 3/4"



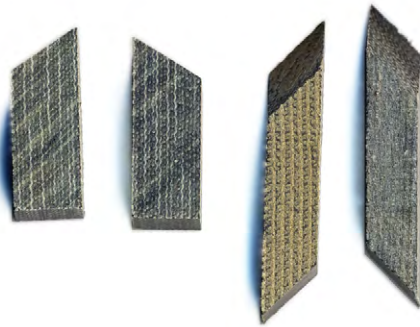
## CB50085BL

For 9" 2 Wheel Band Saws such as Ryobi, Black & Decker, Sears Craftsman, ProTech, Trademaster, and Collins, etc. Contains: 2 guide blocks 13/64" square x 13/16" and 2 guide blocks 13/64" square x 1"



## CB50030BL

For Shopsmith Band Saws. Contains: 2 guide blocks 3/8" x 3/8" x 7/8" and 2 guide blocks 3/8" x 1/4" x 1-5/8"



## CB51010BL

Cool Blocks to cut and customize to a size to fit your band saw. Contains 2 guide blocks 1" x 1" x 1"



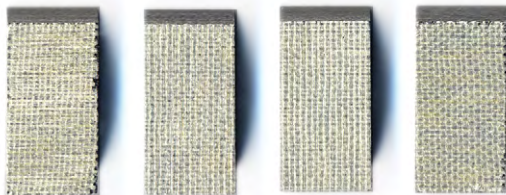
## CB50040BL

For old style Sears band saws using round guides. Contains: 4 guide blocks 1/4" diameter x 7/8"



## CB50050BL

For most 14" Band Saws including Sears Craftsman 14", Jet, Grizzly, Ridgid, etc. Contains: 4 guide blocks 1/2" x 1/2" x 7/8"



Olson Saw Company 16 Stony Hill Rd, Bethel, CT 06801 USA

# OLSON®

customerservice@blackstoneind.com [www.olsonaw.net](http://www.olsonaw.net)